

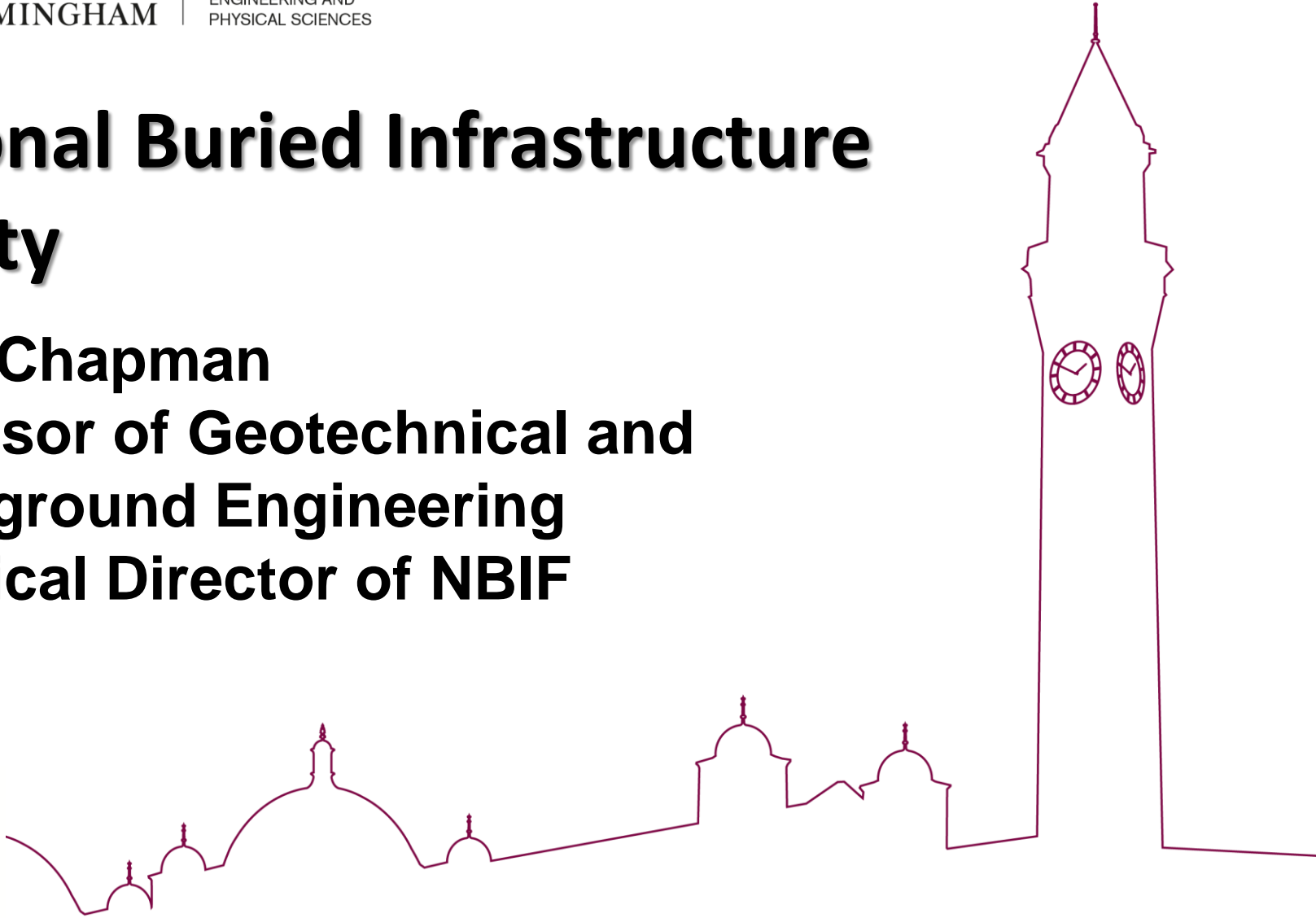


UNIVERSITY OF
BIRMINGHAM

COLLEGE OF
ENGINEERING AND
PHYSICAL SCIENCES

National Buried Infrastructure Facility

David Chapman
Professor of Geotechnical and
Underground Engineering
Technical Director of NBIF



<https://www.birmingham.ac.uk/research/activity/ukcric/national-buried-infrastructure-facility.aspx>

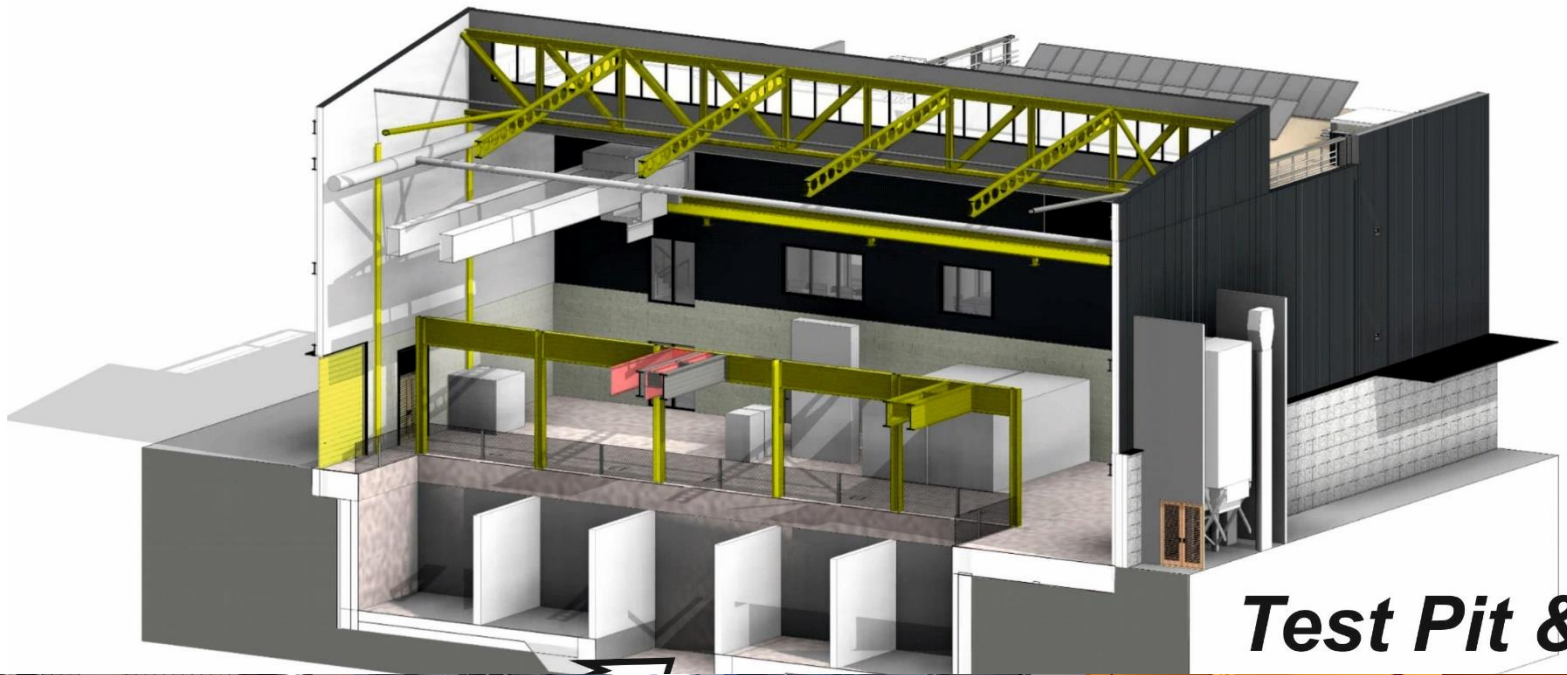
National Buried Infrastructure Facility



UNIVERSITY OF
BIRMINGHAM

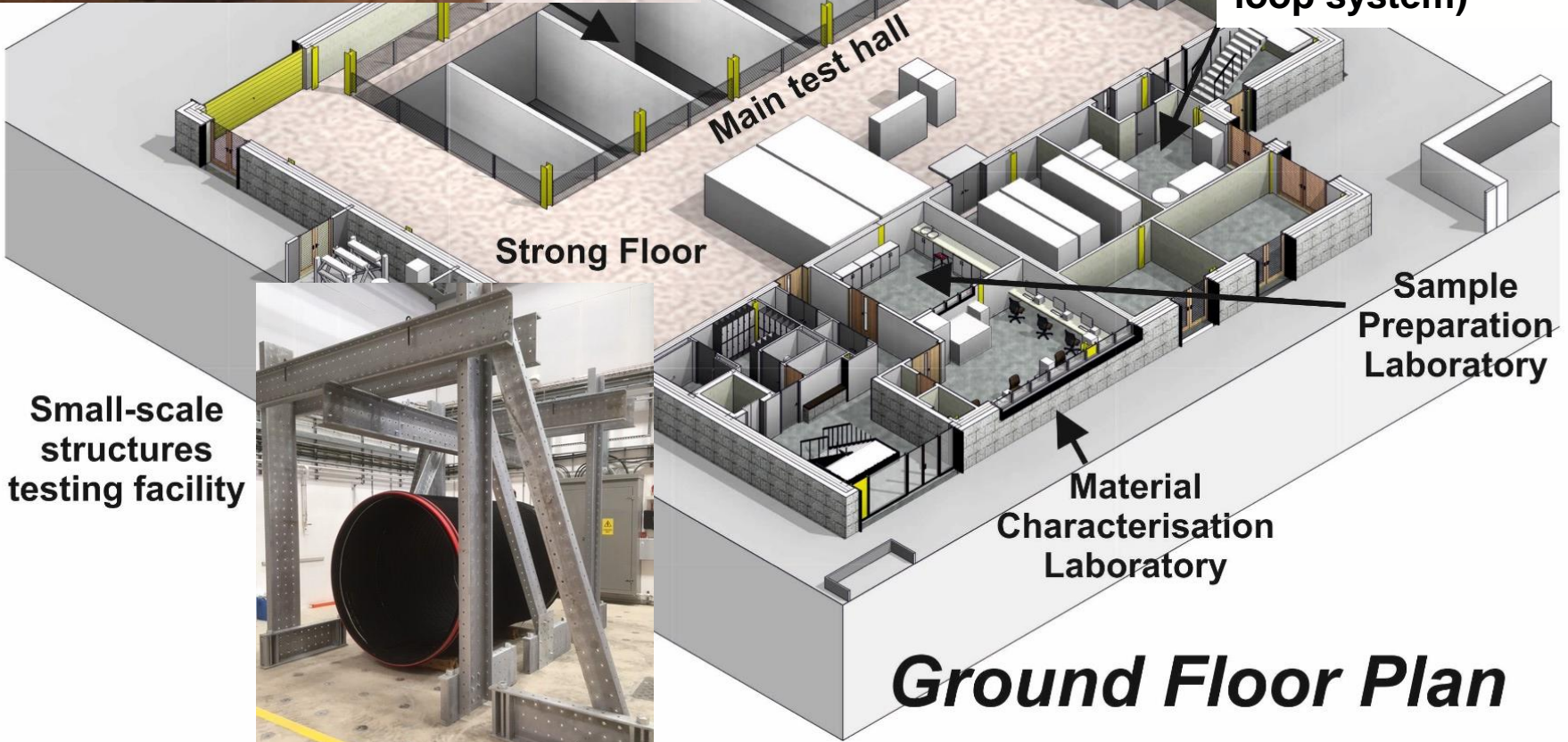
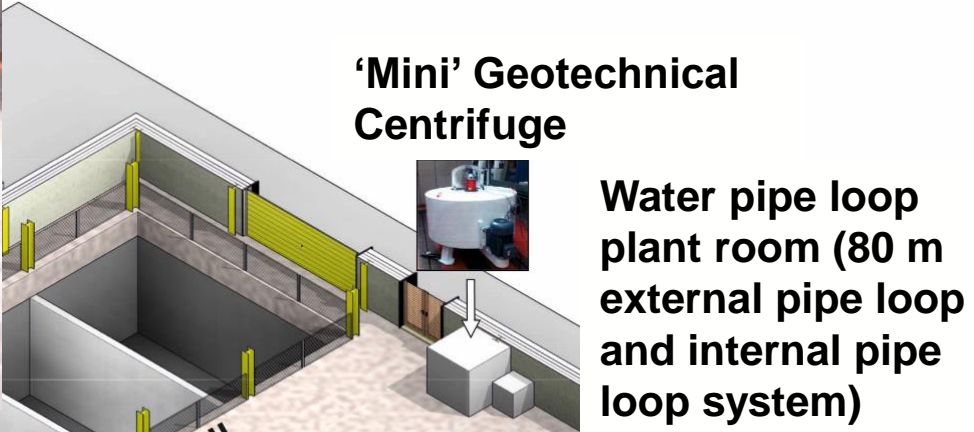
COLLEGE OF
ENGINEERING AND
PHYSICAL SCIENCES

*Fully operational
end of 2021*



Test Pit &





Small-scale structures testing facility

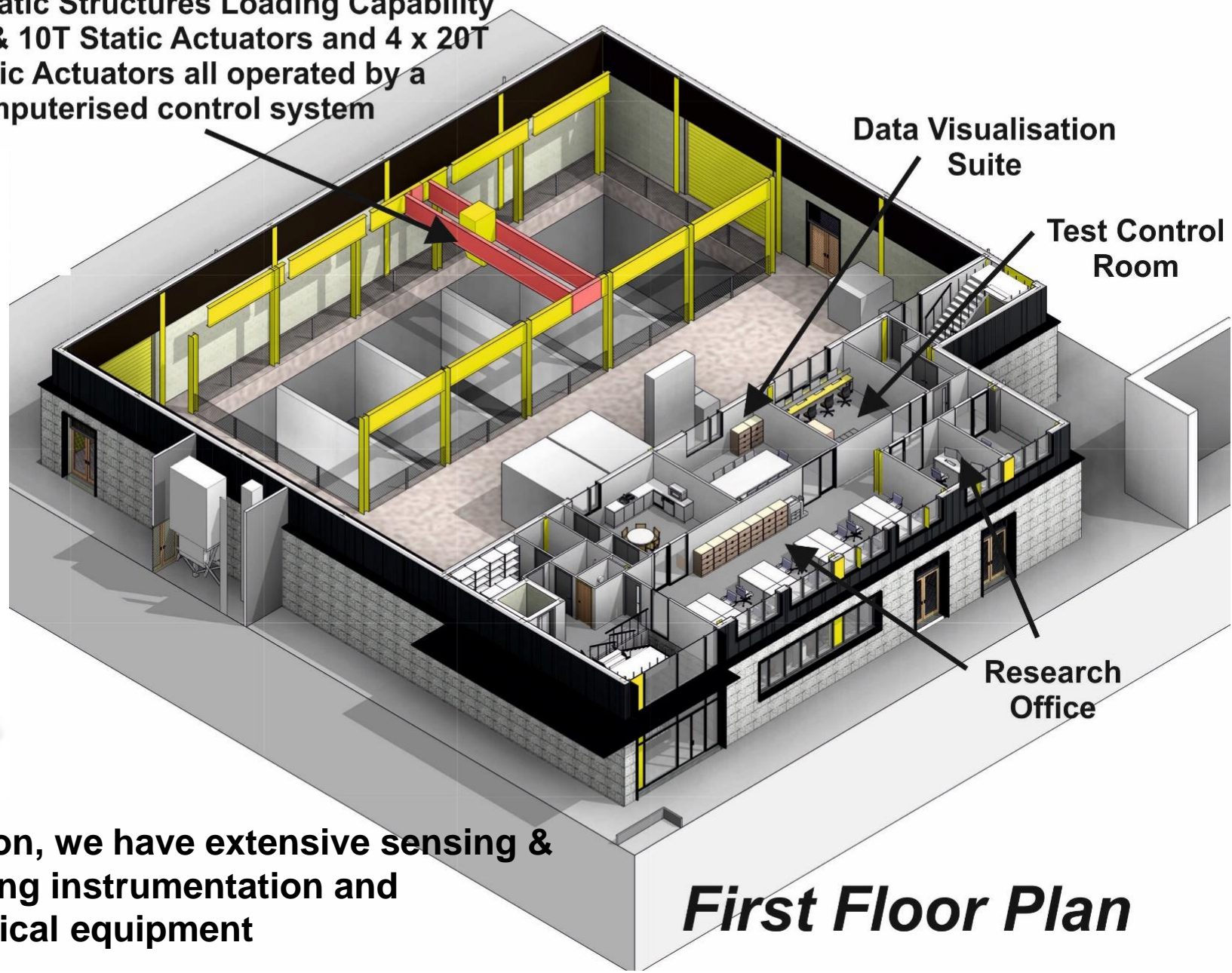


Ground Floor Plan

Filling a section of the pit for one of our initial experiments...

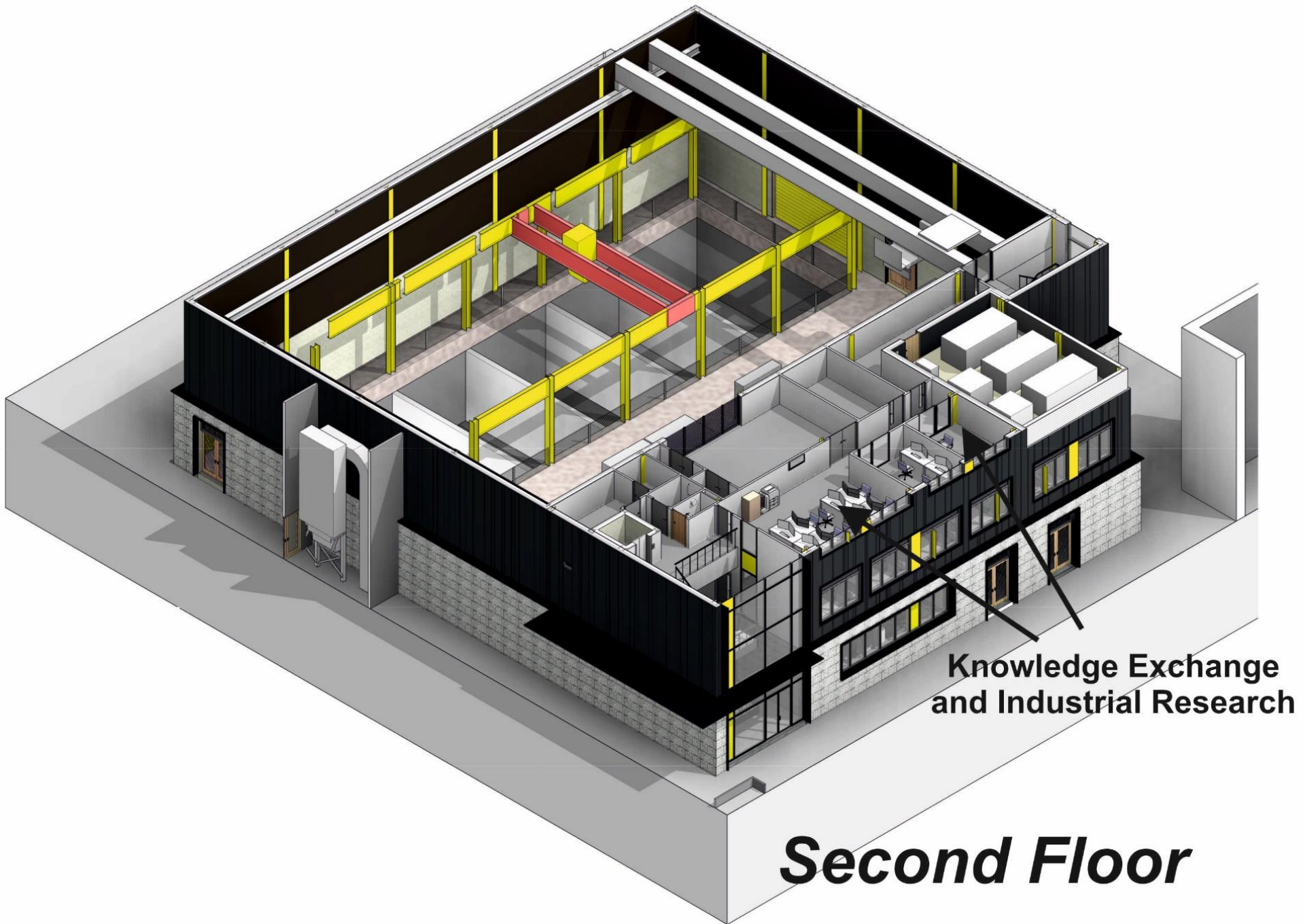


Dynamic-Static Structures Loading Capability
200T, 50T & 10T Static Actuators and 4 x 20T
Dynamic Actuators all operated by a
computerised control system



In addition, we have extensive sensing & monitoring instrumentation and geophysical equipment

First Floor Plan



**Knowledge Exchange
and Industrial Research**

Second Floor

NBIF: University of Birmingham main contacts

Prof. Chris Rogers – Smart Cities & NBIF Director

Prof. David Chapman – Buried Infrastructure

Prof. Nicole Metje – Sensors

Prof. Ian Jefferson – Geostructures

Prof. Nigel Cassidy – Geo-environmental

Dr Asaad Faramarzi – Numerical modelling

